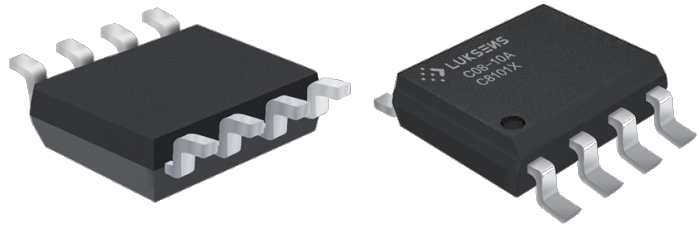


C08-XXA33 Series Current Sensor

The C08-XXA33 series current sensor is a Hall-Effect sensor which is sensitive to the flux density applied orthogonally to the IC surface, and provides an analog output voltage proportional to the applied magnetic flux density. The current is sensed differentially in order to reject common-mode fields, improving accuracy in magnetically noisy environments. It is particularly adapted for high speed applications such as inverters and converters where fast response time due to fast switching is required.



Features

- Factory trimmed sensitivity sensor
- Superior temperature stability and linearity
- Compact size for applications with limited space
- RoHs compliance (Lead-Free)

Advantages

- Accurately measures AC, DC and pulse currents
- Fast response 1.6μs, minimal noise output
- No insertion losses
- Improving noise immunity using differential hall technology
- Excellent current overload capacity
- Very low thermal drift for wide temperature range

Applications

- High voltage traction motor inverter
- 48V boost recuperation inverter
- DCDC converter
- Smart battery junction boxes
- Smart fuse overcurrent detection
- Redundant monitoring of battery management system (BMS)

Standards

- IEC 61800-5-1:2020
- IEC 62109-1: 2010
- IEC 60950-1:2006

Absolute maximum ratings

Symbol	Parameter	Min.	Max.	Unit
$V_{DD\ max.}$	Maximum supply voltage (not destructive)	-0.3	6.5	V
I_{PM}	Maximum measuring current	-50	50	A
T_A	Ambient operating temperature	-40	125	°C
T_S	Storage temperature range	-55	150	°C
T_J	Junction temperature		165	°C
$V_{ESD-HBM}$	ESD sensitivity HBM (Human Body Model)		4	kV

Stresses above these ratings may cause permanent damage. Exposure to absolute maximum ratings for extended periods may degrade reliability.

Specifications ($T_A = 25^\circ\text{C}$, $V_{DD} = 3.3\text{V}$)

Symbol	Parameter	Test condition	Min.	Typ.	Max.	Unit
V_{DD}	Supply voltage		3	3.3	3.6	V
I_C	Current consumption	$I_p=0\text{A}$ without load, $V_{DD}=3.3\text{V}$		7.5	10	mA
I_{PN}	Current nominal measuring range	C08-10A33 X X	-10		10	A
		C08-20A33 X X	-20		20	
		C08-20A33U X X	0		20	
		C08-30A33 X X	-30		30	
		C08-30A33U X X	0		30	
		C08-40A33 X X	-40		40	
		C08-40A33U X X	0		40	
		C08-50A33 X X	-50		50	
$R_{PRIMARY}$	Primary conductor resistance	$T_A=25^\circ\text{C}$		0.85		mΩ
T_{PO}	Power-On time			1		ms

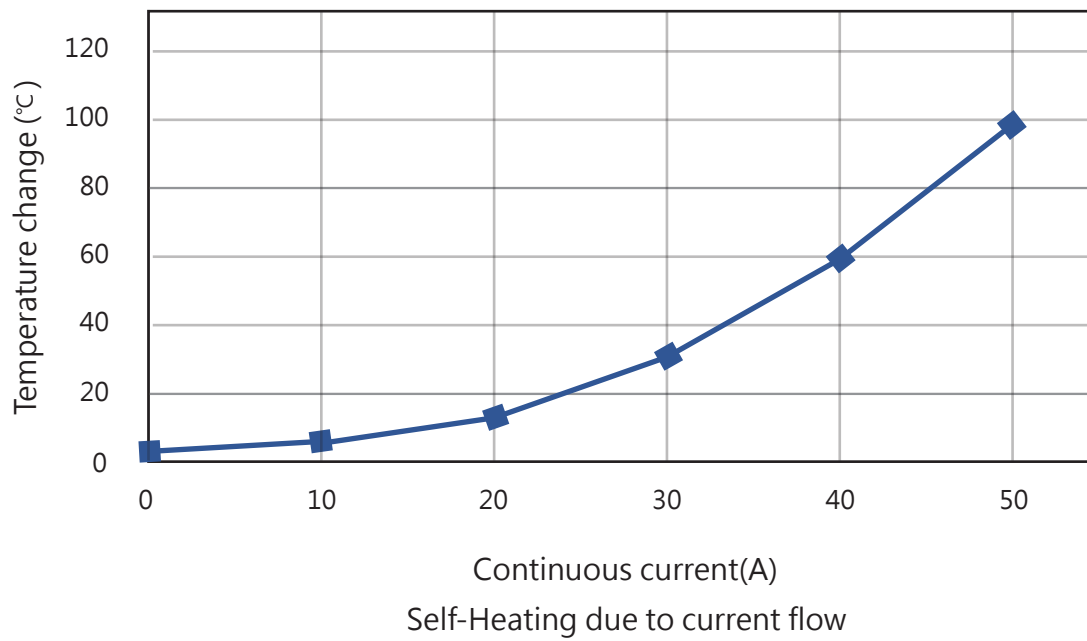
Specifications ($T_A = 25^\circ\text{C}$, $V_{DD} = 3.3\text{V}$)

Symbol	Parameter	Test condition	Min.	Typ.	Max.	Unit
R_L	Output load resistance	V_{OUT} to GND	4.7			k Ω
C_L	Output load capacitance	V_{OUT} to GND			10	nF
V_{REF}	Internal reference voltage	$I_P=0\text{A}$, $V_{DD}=3.3\text{V}$ (Reference-Voltage mode)	1.64	1.65	1.66	V
V_O	$V_{OUT}(@I_P=0\text{A})$	$V_{DD}=3.3\text{V}$, Bidirectional, Reference-Voltage mode	1.64	1.65	1.66	V
		$V_{DD}=3.3\text{V}$, Unidirectional, Reference-Voltage mode	0.32	0.33	0.34	
		$V_{DD}=3.3\text{V}$, Bidirectional, Filter mode		$V_{DD} \cdot 0.5$		
		$V_{DD}=3.3\text{V}$, Unidirectional, Filter mode		$V_{DD} \cdot 0.1$		
V_{OE}	Offset voltage	$I_P=0\text{A}$	-15		15	mV
G	Nominal sensitivity (customized available)	C08-10A33 X X		132		mV/A
		C08-20A33 X X		66		
		C08-20A33U X X		132		
		C08-30A33 X X		44		
		C08-30A33U X X		88		
		C08-40A33 X X		33		
		C08-40A33U X X		66		
		C08-50A33 X X		26.4		
		C08-50A33U X X		52.8		
T_{CG}	Temperature coefficient of G	$T_A = -40^\circ\text{C} \dots 125^\circ\text{C}$		± 2.5		%
T_{CVO}	Temperature coefficient of V_O @ $I_P=0\text{A}$ $T_A = -40^\circ\text{C} \dots 125^\circ\text{C}$		-12		12	mV
ϵ_L	Non-linearity error	$\pm I_{PN}$ without offset		± 0.1	± 0.2	%/ I_{PN}
BW	Frequency bandwidth (-3dB)			250		kHz
T_R	Step response to 90% I_{PN}	(Design target)		1.6		μs

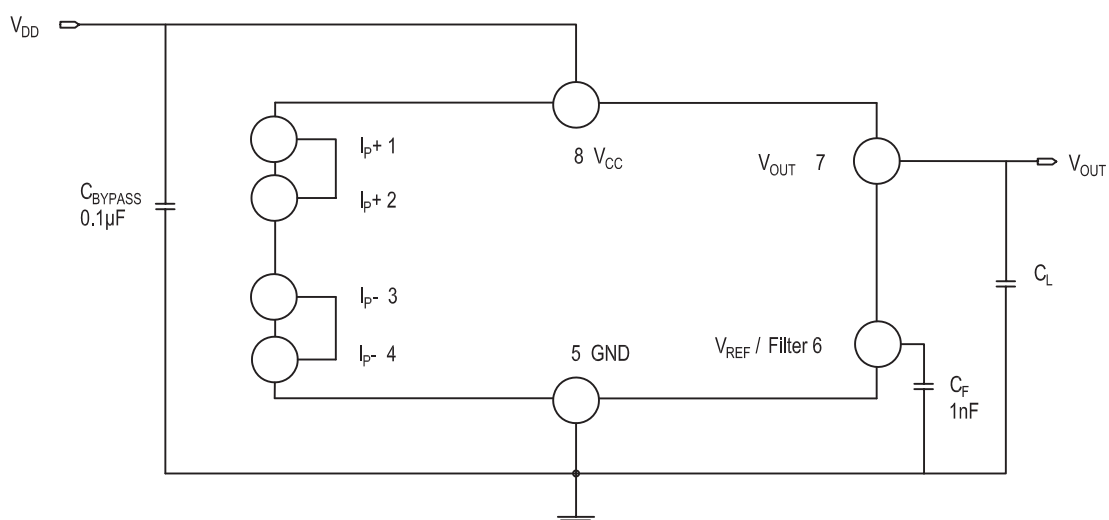
Insulation characteristics

Symbol	Parameter	Value	Unit	Comment
V_{ISO}	Dielectric strength test voltage	3000	Vrms	60s, 50Hz isolation withstand voltage parameters, according to UL62368-1, test 3.6kV/1s before delivery to verify the insulation performance, and verify the partial discharge is less than 5pc.
V_{SURGE}	Dielectric Surge Voltage	4000	V	Test method refers to IEC61000-4-5, 1.2μs/50μs waveform.
V_{UVBI}	Working Voltage for Basic Isolation	420	VDC	Maximum approved working voltage for basic(single)isolation according to UL 60950-1
		297	V _{rms}	
D-CLE	Clearance	4	mm	Shortest distance through air
D-CRD	Creepage distance	4	mm	Shortest distance through body
CTI	Comparative Tracking Index	400 to 599	V	Material Group II

Thermal Curve

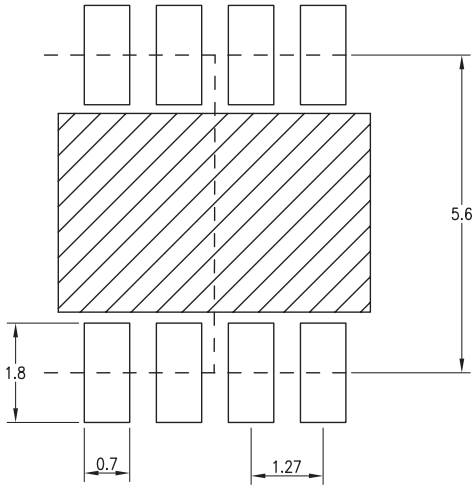


Typical Application Circuit



PCB footprint (mm, general tolerance: $\pm 0.05\text{mm}$)

PCB Layout



Note:

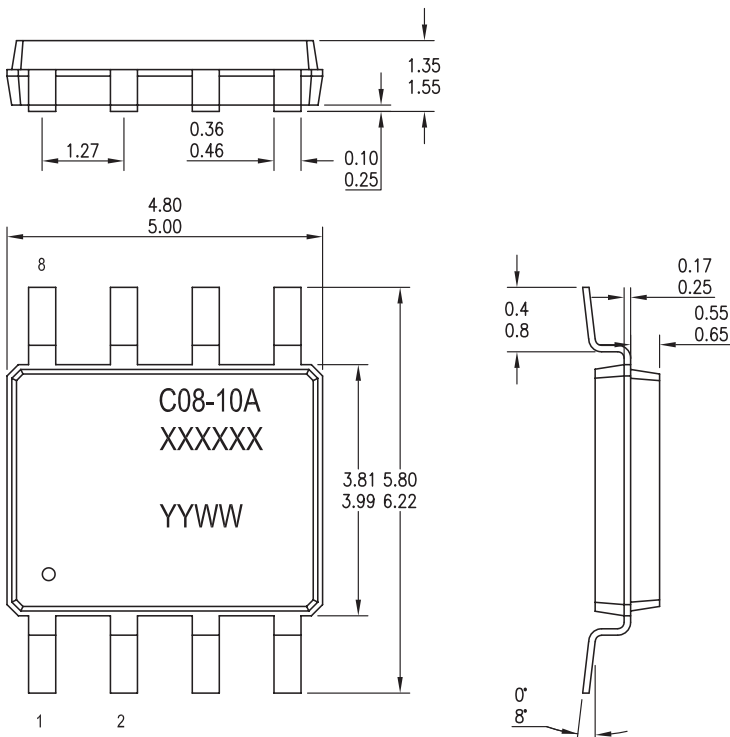
Maximum soldering temperature 260°C 10s

Maximum PCB thickness 2.4mm

All pads must maintain a minimum distance of 0.20 mm from adjacent pads.

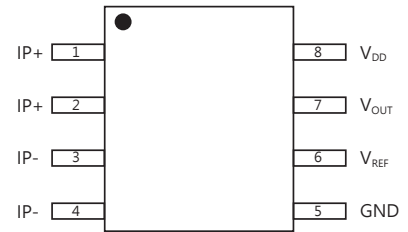
Adjust as needed to comply with application process requirements and PCB layout tolerances.

Dimension (mm)



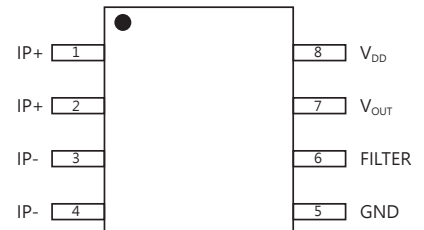
Pinout Diagram

Number	Name	Description
1,2	IP+	Positive terminals for primary sensed current
3,4	IP-	Negative terminals for primary sensed current
5	GND	Ground terminal
6	V _{REF}	Internal reference voltage output
7	V _{OUT}	Output signal terminal
8	V _{DD}	Power supply terminal



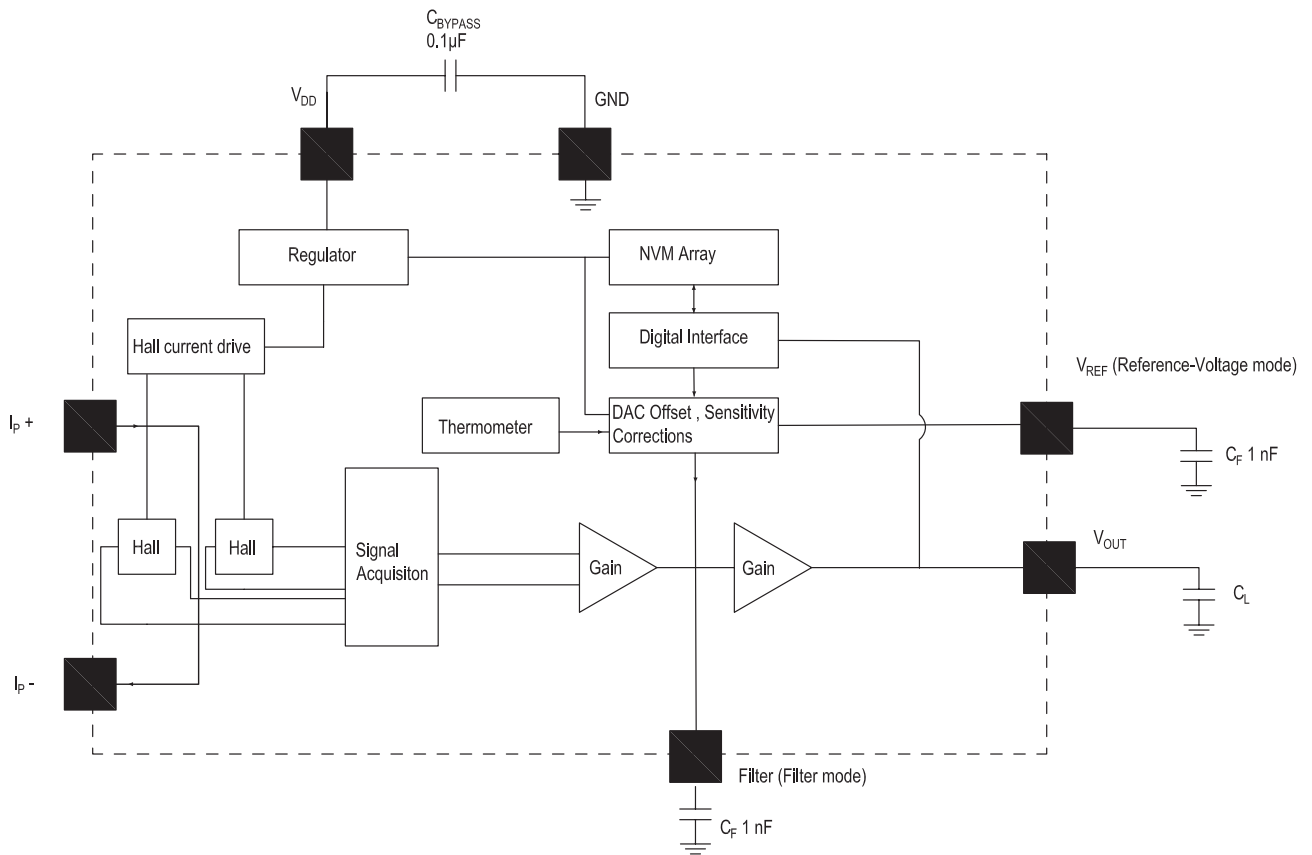
Reference-Voltage mode
Pinout Diagram

Number	Name	Description
1,2	IP+	Positive terminals for primary sensed current
3,4	IP-	Negative terminals for primary sensed current
5	GND	Ground terminal
6	FILTER	Terminal for extend capacitor that adjust bandwidth
7	V _{OUT}	Output signal terminal
8	V _{DD}	Power supply terminal

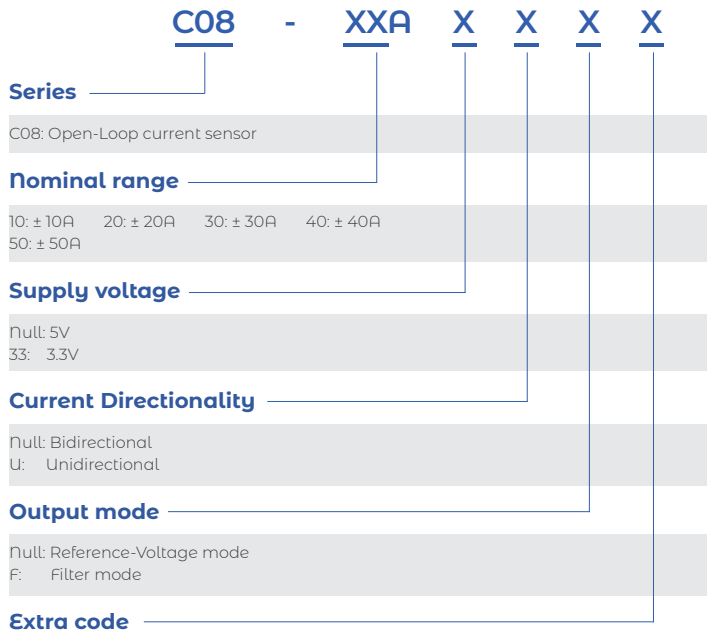


Filter mode
Pinout Diagram

Block diagram



Name Guide Description



Notes

The content of this document is subject to revision without notice. Luksens shall have no liability for any error or damage of any kind resulting from the use of this document.

Safety and Environment



The product is to be installed by manufacturer trained personnel or competent person trained in accordance with manufacturer installation instructions.

With respect to applicable standards IEC 61010-1/ EN 61010-1 *safety requirements for electrical equipment for measurement, control and laboratory use part 1 general requirements*, the product should be used in limited energy secondary circuits.



Risk of electrical shock

Certain parts of the module can carry hazardous voltage during the operation process of the product because hazardous live voltage of primary conductor, power supply occurs, injury and/or serious damage will be caused if this warning is ignored.

Conducting parts must be inaccessible after installation of the product. Additional protection including shield or protective housing could be used according to IEC 60664 Insulation coordination for equipment within low-voltage supply systems.

Disconnection of the main supply will protect against possible injury and serious damage.



ESD protection

Damage from an ESD event will occur if the personnel is not well grounded when handling.

Important notice

Luksens reserves the right to change the specifications, including all statements and data appearing in Luksens' catalogues, data sheets and advertisements, without notice. Luksens will publish the modified specifications on its website. If such changes to specifications are made, Luksens shall have no obligation to provide the change on Products previously purchased. The information included herein is believed to be accurate and reliable. However, since additional design, measure, production, quality control take effect in the end product, therefore Luksens shall have no liability for any potential hazards, damages, injuries or loss of life resulting from the end product. Luksens products are not to be used in any equipment or system, including but not limited to life support equipment or systems, where failure of Luksens products may cause bodily harm.